

FEATURES:

- Half port and single port designs for maximum layout flexibility
- Low profile packages from 0.094" (2.39 mm) to 0.078" (1.98 mm) for PC Card
- Recognized By UL 60950-1

YUAN DEAN SCIENTIFIC



LAN Filters

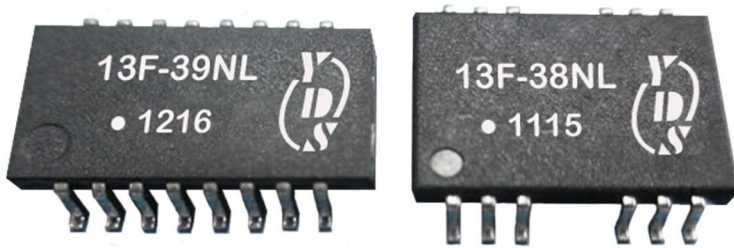
13F-3X SERIES

10/100 Base-T

PC Card

LAN Magnetics Modules

16PIN PCMCIA



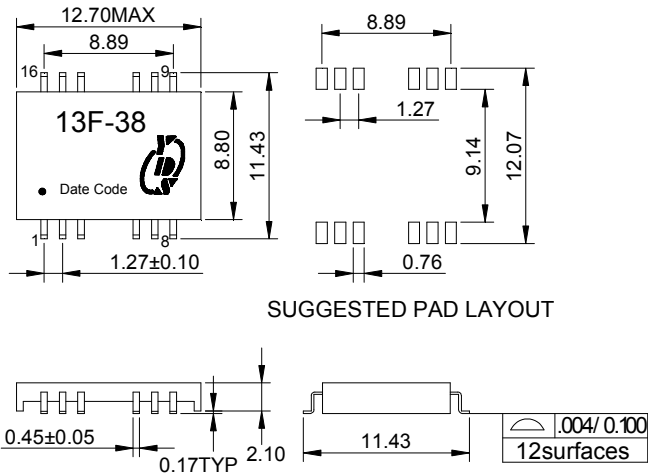
ELECTRICAL SPECIFICATIONS@25°C  
Operating temperature 0°C TO 70°C

Part Number	Turns Ratio(±5%)		Insertion Loss (dB MAX.)	Return Loss (dB MIN)			Differential to Common Mode Rejection (dB MIN)			Crosstalk (dB MIN)			Hipot V <sub>rms</sub> MIN
	Transmit	Receive		0.3-100 MHz	30 MHz	60 MHz	80 MHz	30 MHz	50 MHz	100 MHz	30 MHz	62 MHz	
13F-38NL	1CT:1CT	1CT:1CT	-1.0	-17	-12	-10	-30	-30	-30	-40	-35	-30	1500
13F-39NL	1CT:1CT	1CT:1CT	-0.9	-16	-12	-11	-35	-33	-20	-50	-45	-40	1500

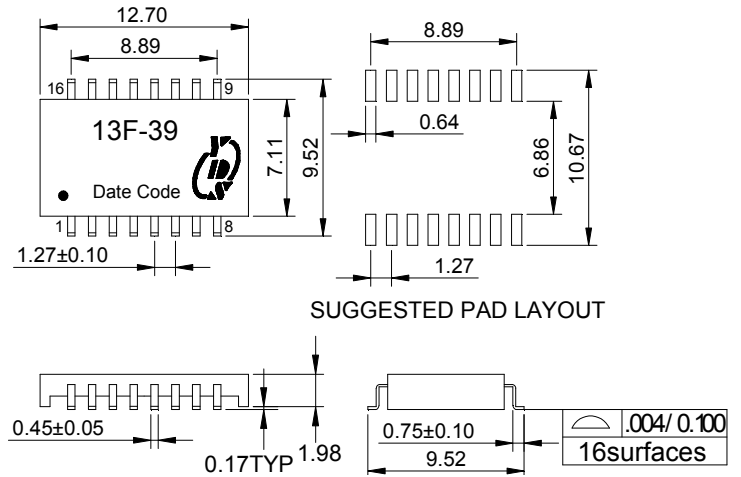


Mechanicals and Dimensions

13F-38



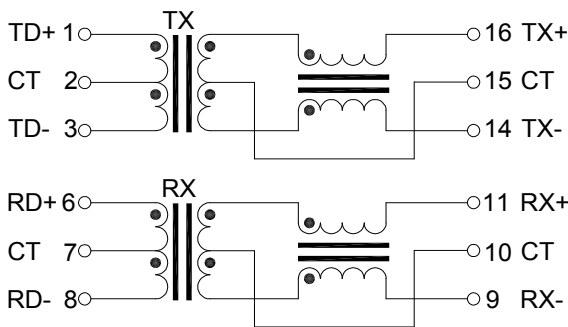
13F-39



UNIT:mm Unless otherwise specified,all tolerances are ±0.25

Schematics

13F-38



13F-39

